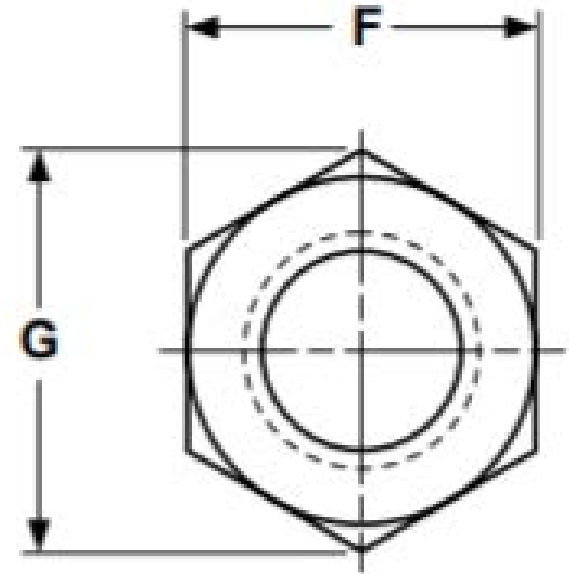
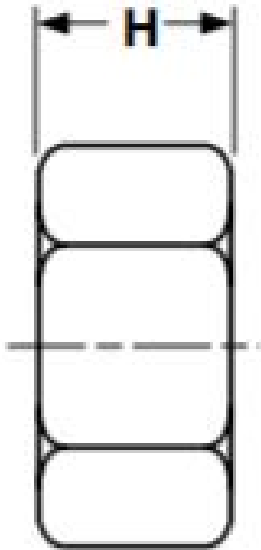




545 Basket Road • Webster, NY 14580  
Toll Free • 800.691.0292 | Local • 585.265.1990 | Fax • 585.265.6678  
[sales@fastenersdirect.com](mailto:sales@fastenersdirect.com)  
[www.fastenersdirect.com](http://www.fastenersdirect.com)

# HEX NUTS - GRADE 5 & 8 BLACK OXIDE





545 Basket Road • Webster, NY 14580  
 Toll Free • 800.691.0292 | Local • 585.265.1990 | Fax • 585.265.6678  
 sales@fastenersdirect.com  
 www.fastenersdirect.com

# HEX NUTS - GRADE 5 & 8 BLACK OXIDE

Nominal or Basic Major Diameter of Thread	F Width Across Flats			G Width Across Corners		H Thickness of Hex Nuts			
	Basic	Max	Min	Max	Min	Basic	Max	Min	
	1/4	0.2500	7/16	0.438	0.428	0.505	0.488	7/32	0.226
5/16	0.3125	1/2	0.500	0.489	0.577	0.557	17/64	0.273	0.258
3/8	0.3750	9/16	0.562	0.551	0.650	0.628	21/64	0.273	0.258
7/16	0.4375	11/18	0.688	0.675	0.794	0.768	3/8	0.385	0.365
1/2	0.5000	3/4	0.750	0.736	0.866	0.840	7/16	0.448	0.427
9/16	0.5625	7/8	0.875	0.861	1.010	0.982	31/64	0.496	0.473
5/8	0.6250	15/16	0.938	0.922	1.083	1.051	35/64	0.559	0.535
3/4	0.755	1-1/8	1.125	1.088	1.299	1.240	41/64	0.665	0.617

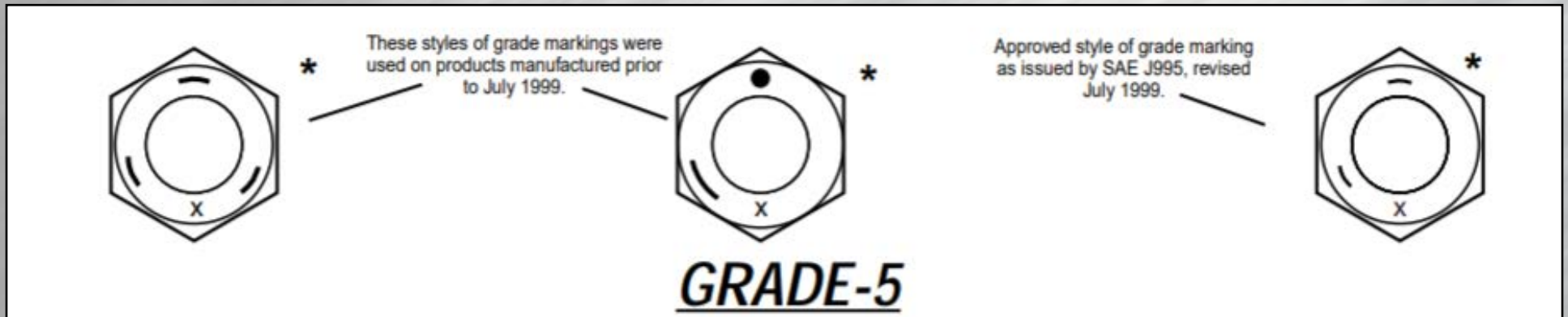


545 Basket Road • Webster, NY 14580  
 Toll Free • 800.691.0292 | Local • 585.265.1990 | Fax • 585.265.6678  
 sales@fastenersdirect.com  
 www.fastenersdirect.com

# HEX NUTS - GRADE 5 & 8 BLACK OXIDE

Nominal or Basic Major Diameter of Thread	F Width Across Flats			G Width Across Corners		H Thickness of Hex Nuts			
	Basic	Max	Min	Max	Min	Basic	Max	Min	
7/8	0.8750	1-5/16	1.312	1.269	1.516	1.447	3/4	0.776	0.724
1	1.000	1-1/2	1.500	1.450	1.732	1.653	55/64	0.887	0.831
1-1/8	1.1250	1-11/16	1.688	1.631	1.949	1.859	31/32	0.999	0.939
1-1/4	1.2500	1-7/8	1.875	1.812	2.165	2.066	1-1/16	1.094	1.030
1-3/8	1.375	2-1/16	2.062	1.994	2.382	2.273	1-11/64	1.206	1.138
1-1/2	1.500	2-1/4	2.250	2.175	2.598	2.480	1-9/32	1.317	1.245

# HEX NUTS - GRADE 5 & 8 BLACK OXIDE

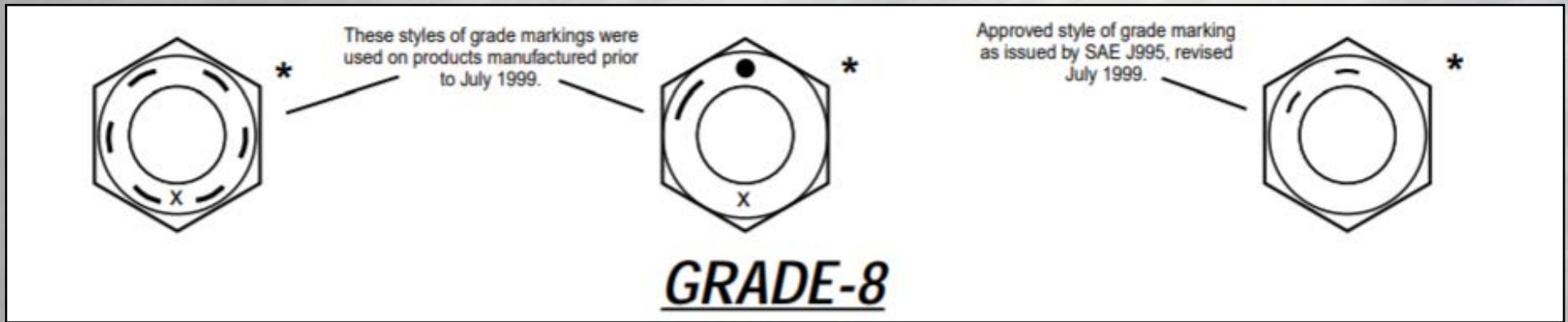


<b>Description</b>	A finished hex nut made from steel with a maximum carbon content of 0.55%, a minimum manganese content of 0.30% and a maximum sulfur content of 0.15%
<b>Applications / Advantages</b>	For use with a minimum tensile strength equal to or less than the specified proof stress of the nut.
<b>Material</b>	AISI 100B - 1026 or equivalent steel
<b>Core Hardness</b>	Rockwell C32 maximum
<b>Proof Load</b>	1/4 through 1 in. <u>Coarse Thread</u> : 120,000 pis; <u>Fine Thread</u> : 109,000 psi 1-1/8 hrough 1-1/2 in. <u>Coarse Thread</u> : 105,000 psi; <u>Fine Thread</u> : 94,000 psi



545 Basket Road • Webster, NY 14580  
 Toll Free • 800.691.0292 | Local • 585.265.1990 | Fax • 585.265.6678  
 sales@fastenersdirect.com  
 www.fastenersdirect.com

# HEX NUTS - GRADE 5 & 8 BLACK OXIDE



<b>Description</b>	A finished hex nut made from steel with a maximum carbon content of 0.55%, a minimum manganese content of 0.30% and a maximum sulfur content of 0.05%. The purchaser and producer of the nuts may agree to allow a sulfur content of 0.33% maximum provided that the manganese content is at least 1.35%
<b>Applications / Advantages</b>	For use with bolts with a minimum tensile strength equal to or less than 150,000 psi.
<b>Material</b>	AISI 1021 - 1045 or equivalent steel.
<b>Core Hardness</b>	<u>1/4 through 5/8 in.:</u> Rockwell C24 - C32 <u>3/4 through 1 in.:</u> Rockwell C26 - C34 <u>Over 1 in. through 1-1/2 in.:</u> Rockwell C26 - C36
<b>Proof Load</b>	1/4 through 1-1/2 in.: 150,000 psi.